



Bouvet Classics in Brass

2009
F-1

DOOR HARDWARE ACCESSORIES

GENERAL INFORMATION

Knobs on Back Plate

- Knobs on back plates are usually used as single dummies for closets or cabinet doors. Each Dummy Knob on Back Plate includes one knob (1600 series), one back plate (1701) and one half dummy spindle.
- Knobs (1600 series) and back plate (1701 series) can also be used as components of a passage set, privacy set, or full dummy set.
- All knobs (1600 series) can be used instead of the levers on all the sets from the 2000, 2200, 2500, and 2600 series.
- Please note that the back plate No.1701 can not be used on a 2¹/₈" pre-drilled door.

Door Knockers

- All door knockers are supplied with a thru bolt accommodating doors up to 2¹/₂" and an ornamental bolt cover.
- A back plate to protect the door.

Surface Bolts

- Surface Bolts come in 3 sizes. Other sizes can be special ordered (up to 24"), minimums required.
- Surface Bolts are supplied with a surface mounting strike, and a mortise strike (angle strikes and universal strikes are available on special order).

F-1

09
bouvet

DOOR HARDWARE ACCESSORIES

KNOBS ON BACK PLATE

KNOB ON BACK PLATE
No. 1601-88



Composition:

Item No.	Description	Length	Width	Projection
1601	Knob*	3 ³ / ₄ "	3/4"	2 ¹ / ₈ "

KNOB ON BACK PLATE
No. 1602-88



Composition:

Item No.	Description	Length	Width	Projection
1602	Knob*	3 ¹ / ₄ "	1 ³ / ₈ "	2 ¹ / ₈ "

KNOB ON BACK PLATE
No. 1603-88



Composition:

Item No.	Description	Length	Width	Projection
1603	Knob*	3 ¹ / ₄ "	7/8"	2"

KNOB ON BACK PLATE
No. 1604-88



Composition:

Item No.	Description	Length	Width	Projection
1604	Knob*	3 ³ / ₄ "	1 ¹ / ₄ "	2"

KNOB ON BACK PLATE
No. 1609-88



Composition:

Item No.	Description	Length	Width	Projection
1609	Knob*	3 ¹ / ₄ "	3/4"	2 ³ / ₈ "

KNOB ON BACK PLATE
No. 1610-88



Composition:

Item No.	Description	Length	Width	Projection
1610	Knob*	3 ¹ / ₈ "	1"	2 ¹ / ₈ "

KNOB ON BACK PLATE
No. 1611-88



Composition:

Item No.	Description	Length	Width	Projection
1611	Knob*	2 ⁵ / ₈ "	1 ³ / ₈ "	2"

KNOB ON BACK PLATE
No. 1650-88



Composition:

Item No.	Description	Length	Width	Projection
1650	Knob*	2 ³ / ₈ "	2 ³ / ₈ "	2 ⁷ / ₈ "

* supplied with 1701 Back Plate ((2³/₄" Length) x (1³/₈" Width))



Bouvet Classics in Brass

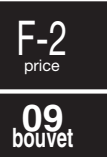
2009
F-2

DOOR HARDWARE ACCESSORIES

KNOBBS ON BACK PLATE PRICE LIST

ITEM No.	DESCRIPTION	SUGGESTED LIST PRICE		
		03	06	04/05/08
	Dummy knob on back plate			
1601-88	Dummy Knob on back plate	122.00	122.00	SPO
1602-88	Dummy Knob on back plate	154.00	154.00	154.00
1603-88	Dummy Knob on back plate	137.00	137.00	SPO
1604-88	Dummy Knob on back plate	100.00	100.00	SPO
1609-88	Dummy Knob on back plate	91.00	91.00	SPO
1610-88	Dummy Knob on back plate	100.00	100.00	SPO
1611-88	Dummy Knob on back plate	106.00	106.00	SPO
1650-88	Dummy Knob on back plate	187.00	187.00	187.00

Please refer to section G on Door Hardware – Components & Parts, for prices of Knob only and Back Plate only. Knobs can be used instead of levers on any set.

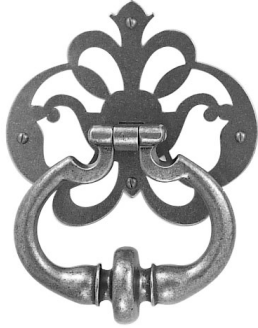




DOOR HARDWARE ACCESSORIES

DOOR KNOCKERS, SURFACE BOLTS, FLUSH PULL AND DOOR BUMPERS

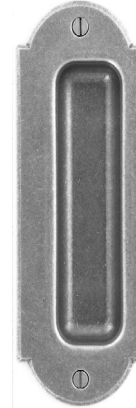
DOOR KNOCKER
No. 3004



Composition:

Item No.	3004
Description	Door Knocker
Length	6 ³ / ₈ "
Width	5"

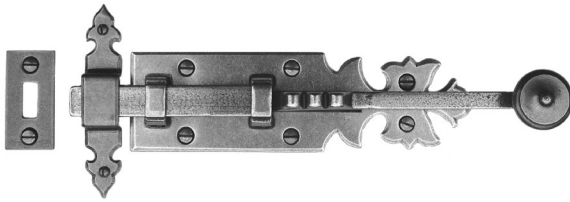
FLUSH PULL
No. 3250



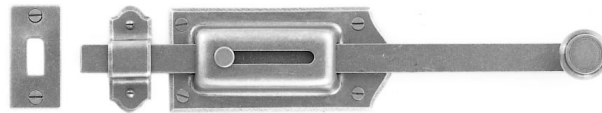
Composition:

Item No.	3250
Description	Flush Pull
Length	6 ¹ / ₈ "
Width	2 ¹ / ₄ "
Projection	1 ¹ / ₈ "
Depth	1 ¹¹ / ₁₆ "

SURFACE BOLT No. 3801



SURFACE BOLT No. 3802



F-3

09
bouvet

Sizes available:

Item No.	Description	Length
3801-25	Surface Bolt	9 ⁷ / ₈ "
3801-30	Surface Bolt	11 ⁷ / ₈ "
3801-40	Surface Bolt	15 ³ / ₄ "

Sizes available:

Item No.	Description	Length
3802-25	Surface Bolt	9 ⁷ / ₈ "
3802-30	Surface Bolt	11 ⁷ / ₈ "
3802-40	Surface Bolt	15 ³ / ₄ "

BASE MOUNTED DOOR BUMPER No. 3501



FLOOR BUMPER No. 3502



Composition:

Item No.	Description	Base Diameter	Projection
3501	Base Mounted Door Bumper	1 ¹ / ₈ "	3 ¹ / ₄ "

Composition:

Item No.	Description	Base Diameter	Projection
3502	Floor Bumper	1 ¹ / ₂ "	1 ³ / ₄ "



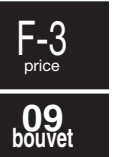
Bouvet Classics in Brass

2009
F-3

DOOR HARDWARE ACCESSORIES

DOOR KNOCKERS, SURFACE BOLTS, FLUSH PULL AND DOOR BUMPERS PRICE LIST

FINISHES		03 - POLISHED BRASS	06 - SATIN ANTIQUE BRASS	04 - BRONZE PATINA	05 - SATIN NICKEL	08 - POLISHED NICKEL
ITEM No.	DESCRIPTION	SUGGESTED LIST PRICE				
		03	06	04/05/08		
Door Knockers						
3004-00	Door Knocker	293.00	293.00			322.00
Surface Bolts						
3801-25	Surface Bolt	260.00	260.00			SPO
3801-30	Surface Bolt	260.00	260.00			SPO
3801-40	Surface Bolt	262.00	262.00			SPO
3802-25	Surface Bolt	190.00	190.00			SPO
3802-30	Surface Bolt	222.00	222.00			SPO
3802-40	Surface Bolt	251.00	251.00			SPO
Universal Strikes for Surface Bolts						
8972-15	Universal Strike (15 mm)	24.00	24.00			SPO
Flush Pulls						
3250-00	Flush Pull	56.00	56.00			56.00
Door Bumpers						
3251-00	Base Mounted Door Bumper	58.00	58.00			58.00
3502-00	Floor Bumper	58.00	58.00			58.00





Bouvet Classics in Brass

2009
F-4

DOOR HARDWARE ACCESSORIES

RESERVED FOR FUTURE ADDITIONS

F-4

09
bouvet