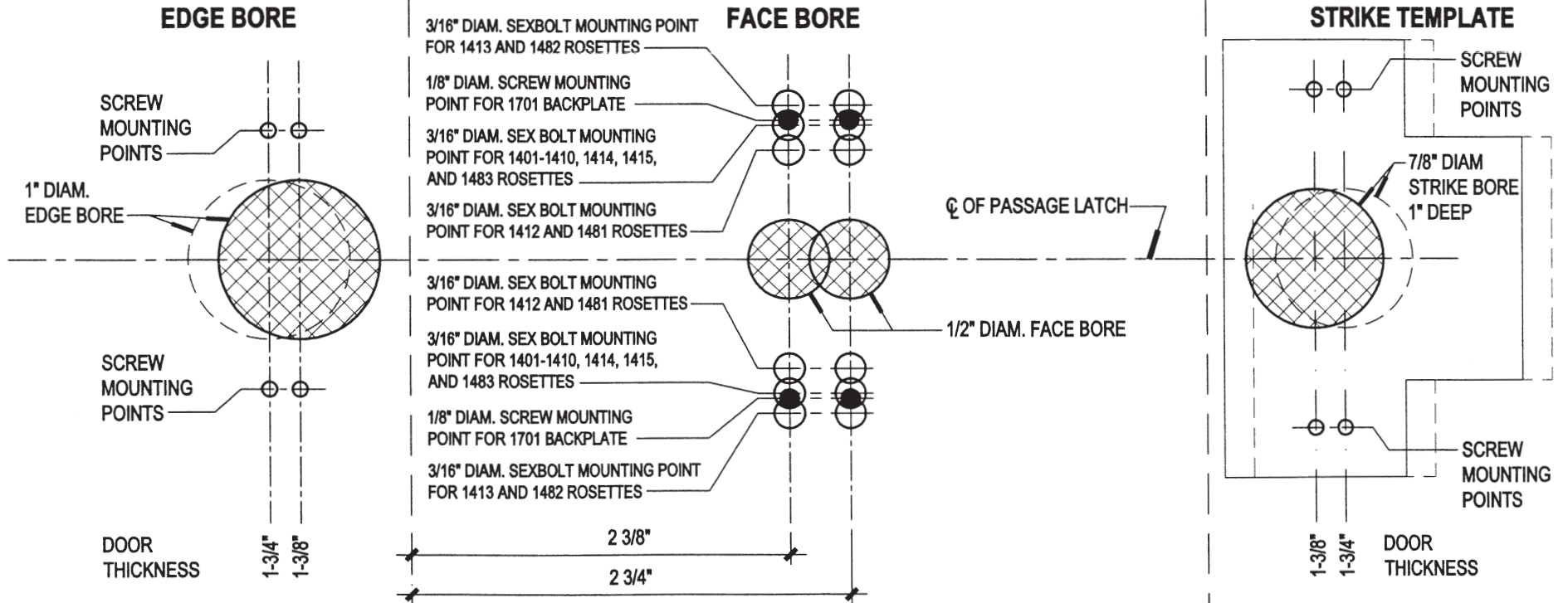


BOUVET HARDWARE TEMPLATES

BOUVET PASSAGE LATCH TEMPLATE

Custom Cut Template

(to be used when a 2-1/8" diameter hole is not applicable or preferable)



INSTALLATION INSTRUCTIONS

1. Fold template along dashed line and place on door at height desired.
2. Mark location of bores on edge and face of door.
3. For EDGE BORE, use 1" diameter bit to bore edge 3-1/2" deep for 2-3/8" backset and 3-7/8" deep for 2-3/4" backset.
4. For FACE BORE, bore 1/2" diameter hole through for standard bore.
5. Rosettes 1401-1410 and 1413 have a raised lip. For these rosettes to sit flush on face of door, mortise door face around face bore 1/64" deep and 29/32" wide for raised lip on back for rosette.
6. Mortise door edge for face plate and install. Be sure that face plate lies flush on door edge.
7. Install strike and trim.

FOLD ALONG THIS DASHED LINE

FOLD ALONG THIS DASHED LINE